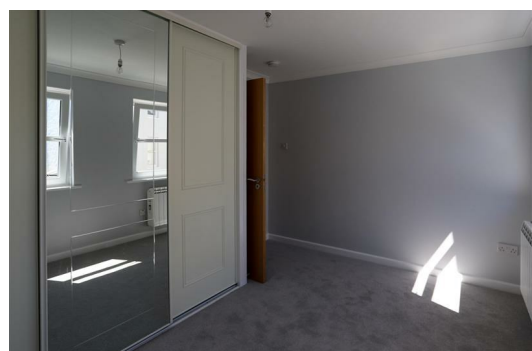


Slomans Estate Agents.
17 La Colomberie, St Helier,
Jersey JE2 4QB
T: 01534 879787
E: sales@slomans.co.uk



Flat 2, 15 Simon Place, St Helier, Jersey, JE2 4SB
£1,250

This modern purpose built one bedroom apartment is conveniently located in a quiet town location with an easy walk into work. This bright apartment is on the first floor with ample natural daylight and a modern and tasteful finish. It is available from mid June and also has the added benefit of a private parking space. Regret, no pets. Entitled/Licensed.



VIEWING

Please call Slomans, Sole Agents on 87 97 87. Please note that all areas and measurements given in these particulars are approximate and rounded. The text, photographs and floor plans are for general guidance only.

